

DRAWING FOR CUSTOMER

- SPEC.:
- Rated Voltage:250V AC,DC
 - Rated Current:3A AC,DC
 - Withstand Voltage:1000V AC/minute
 - Contact Resistance:20mΩ max
 - Insulation Resistance:1000MΩ min
 - Temperature Range:-25℃~+85℃

■Material

- Insulator:PA66 UL94V-0
- Color:White

KB9410-XXHL2A

Part No. _____

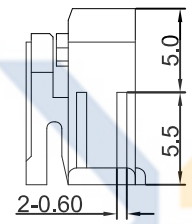
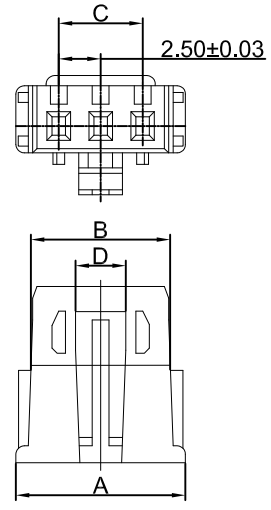
Housing _____

With Lock _____

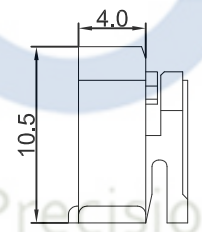
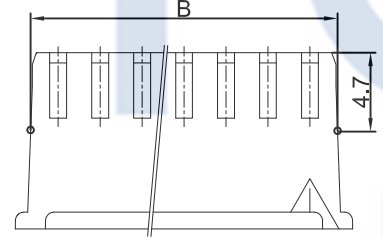
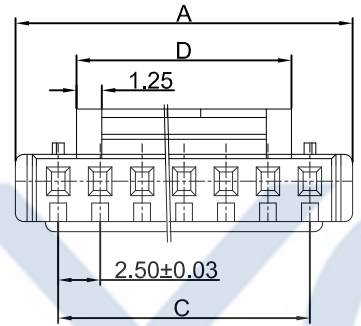
Mold No. _____

Version _____

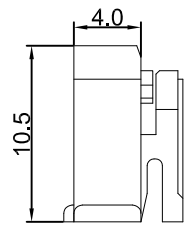
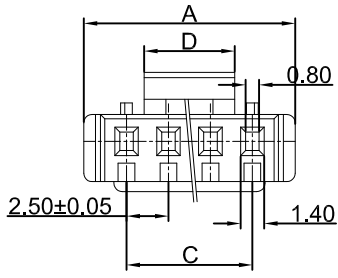
2~3Pin



6~15Pin



4~5Pin



Poles	Dimensions(mm)			
	A	B	C	D
02	6.8	5.79	2.50	3.0
03	9.3	8.29	5.00	3.0
04	11.8	10.79	7.50	5.0
05	14.3	13.29	10.00	5.0
06	16.8	15.79	12.50	10.0
07	19.3	18.29	15.00	12.5
08	21.8	20.79	17.50	15.0
09	24.3	23.29	20.00	17.5
10	26.8	25.79	22.50	17.5
11	29.3	28.29	25.00	17.5
12	31.8	30.79	27.50	17.5
13	34.3	33.29	30.00	17.5
14	36.8	35.79	32.50	17.5
15	39.3	38.29	35.00	17.5

XYCO 东莞市轩业电子科技有限公司
 TEL: 0769-8297 9981/2/3 <http://www.XYCO.com.cn>

2020-06-02	A		KB9410-XXHL2A	Devin	TOLERANCE 公差	DRAWING 設計者	Devin	KB9410-XXHL2A
DATE 日期	VER 版本	CHANGE HISTORY 變更歷史	CHANGED NAME 修改後料號	DRAWING 變更者	.X=±0.30 .XX=±0.20 .XXX=±0.10	CHECKED 審查	Thomas	PART NO. 料號
						APPROVED 核准	William	DWG NO. 圖號
1	2	3	4	5	6	7	8	9

UNIT 單位	mm	PRODUCT NAME 產品名稱	SMH250-NY Wire To Board Housing With Lock-Male
1	2	3	4