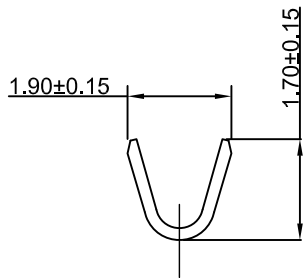
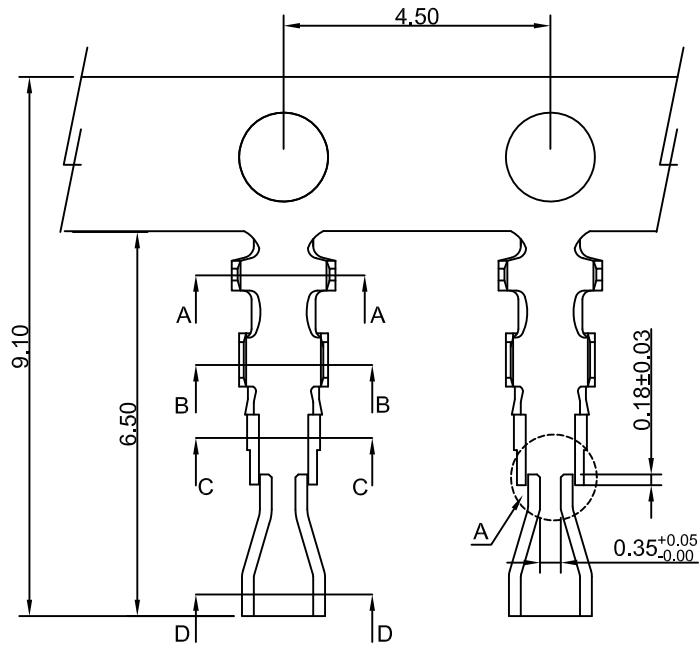
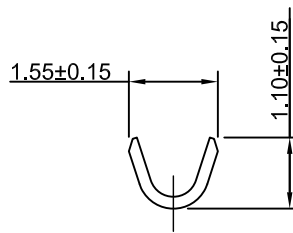
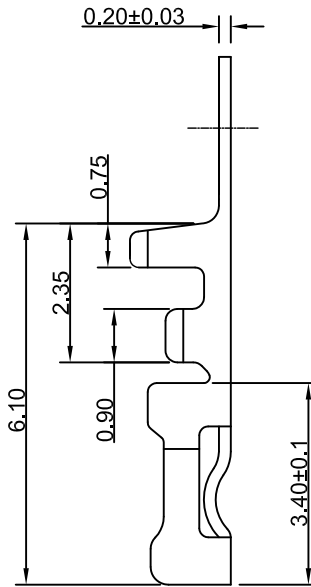


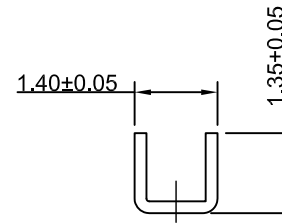
DRAWING FOR CUSTOMER



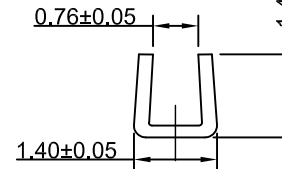
SECTION A-A



SECTION B-B



SECTION D-D

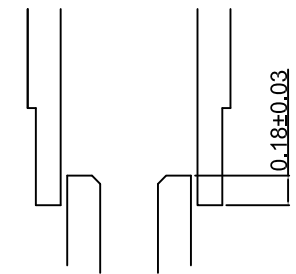


SECTION C-C

- SPEC.:
- Voltage Rating:250V AC/DC
- Current Rating:2.5A AC/DC
- Withstanding Voltage:800V AC1Minute
- Insulation Resistance:1000M_i, Min
- Terminal:
- Applicable Wires:AWG#26~30
- Material:Phosphor C5191 /Brass C2680
- Finish:Gold, Tin Plated Over Nickel Plated
- Q'ty:15KPCS/Reel

KB931-XX T 1 A

- 1:All plated
 - 2:Half plated
- Version
- Mold No.
- Terminal
- Plating
- 0: Tin-plat
 - 1: Gold Plat 1u"
 - 2: Gold Plat 3u"
 - 3: Gold Plat 5u"



A SCALE 10: 1

XYCO PRECISION CONNECTORS

TEL: 0769-8297 9981/2/3 <http://www.XYCO.com.cn>

					TOLERANCE 公差	DRAWING 設計者	John	KB931-XXT1A			
2014-10-16	A	CHANGE HISTORY 變更歷史	KB931-XXT1A	John	.X=±0.30	CHECKED 審查	Thomas	PART NO. 料號			
DATE 日期	VER 版本				.XX=±0.20	APPROVED 核准	William	DWG NO. 圖號	PE3503A	UNIT 單位	mm
					.XXX=±0.10					PRODUCT NAME 產品名稱	DP2.0mm Wire To Board Terminal

UNIT 單位	mm	PRODUCT NAME 產品名稱	DP2.0mm Wire To Board Terminal
------------	----	----------------------	-----------------------------------